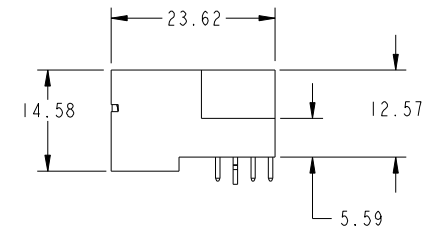
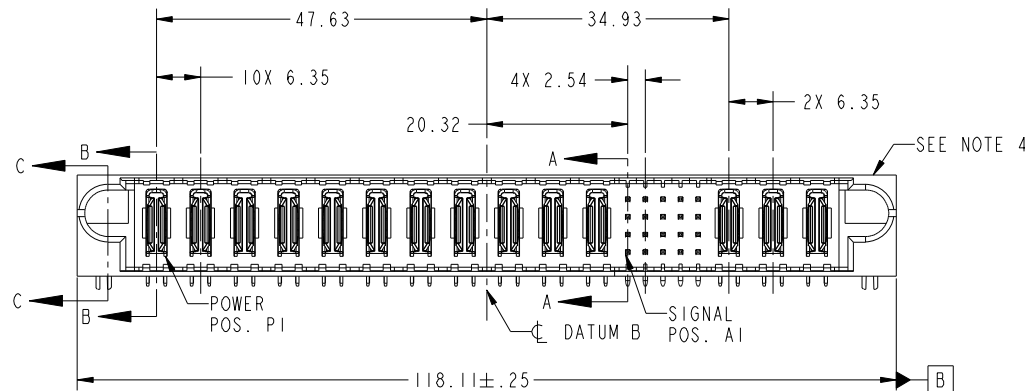
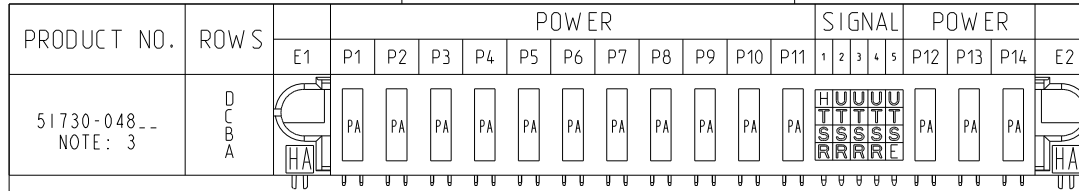


Tous droits strictement reserves. Reproduction ou communication a des tiers interdite sous quelque forme que ce soit sans autorisation ecrite du proprietaire. Propriete de c FCI. Droits de reproduction FCI.



All rights strictly reserved. Reproduction or issue to third parties in any form whatever is not permitted without written authority from the proprietor. Property of FCI. Copyright FCI.



CODE	DIM "M" MATING LENGTH	CONTACT TYPE
PA	[N/A]	POWER
HA	[N/A]	HOLD-DOWN
H	[5.59]	SIGNAL
T	[6.86]	SIGNAL
S	[6.86]	SIGNAL
R	[6.86]	SIGNAL
U	[6.86]	SIGNAL
E	[5.59]	SIGNAL

mat'l code				SEE NOTE		tolerances unless otherwise specified		CUSTOMER	
litr	ecn no.	dr	date			linear	0.X ± 0.5	COPY	
A	V20994	DAI	06/05/02				0.XX ± 0.25	projection	
B	V21034	DAI	06/11/02				0.XXX ± 0.10		
C	DG05-0389	GvoJM	10/17/05			angles	0° ± 2°	MIM	
D	DG07-0498	JW	09/15/08					scale	
						enrg	D. INGRAM 06/05/02		
						chr	M. MOSTOLLER 06/05/02		
						apdd	M. MOSTOLLER 06/05/02		
sheet	revision	D	D	D	D				
index	sheet	1	2	3	4				

CUSTOMER		FCI		www.fciconnect.com	
COPY		title		3P + 20S + 11P RIGHT ANGLE SOLDER HEADER	
product family		PwrBlade		code	
size		dwg no		213	
A		51730-048		sheet	
				1 of 4	

Pro/E	3	4
-------	---	---

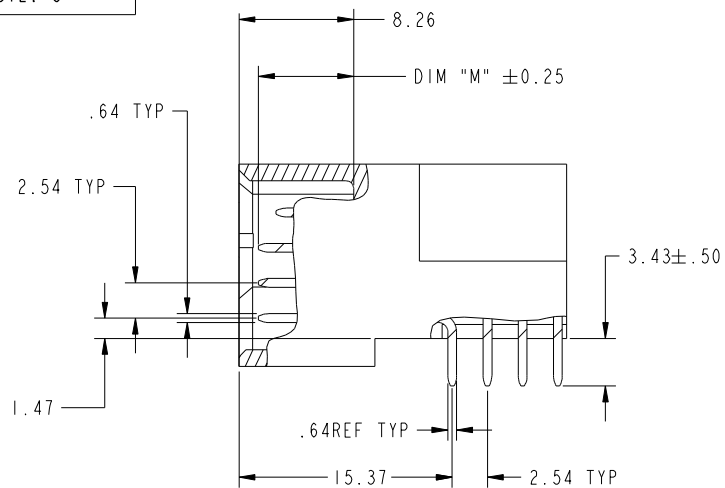
cage code	22526	4
-----------	-------	---

Tous droits strictement reserves. Reproduction ou communication a des tiers interdite sous quelque forme que ce soit sans autorisation écrite du propriétaire. Propriete de c FCI. Droits de reproduction FCI.

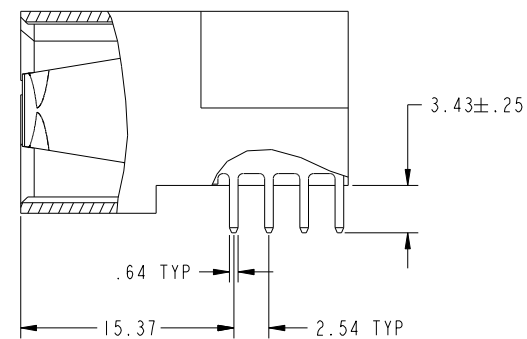


All rights strictly reserved. Reproduction or issue to third parties in any form whatever is not permitted without written authority from the proprietor. Property of FCI. Copyright FCI.

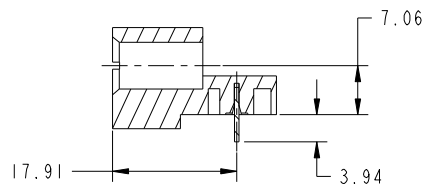
PRODUCT NUMBER  
51730-048--  
NOTE: 3



BROKEN-OUT SECTION A-A  
SCALE 2:1



BROKEN-OUT SECTION B-B  
SCALE 2:1



SECTION C-C

mat'l code				SEE NOTE		tolerances unless otherwise specified		CUSTOMER		FCI	
litr	ecn no.	dr	date			linear	0.X ±0.5	COPY		www.fciconnect.com	
D						angles	0.XX ±0.25	projection		title	
							0.XXX ±0.10			3P + 20S + 11P	
						dr	0° ±2°			RIGHT ANGLE SOLDER HEADER	
						enrg	D. INGRAM 06/05/02			product family PwrBlade	
						chr	M. MOSTOLLER 06/05/02			code 213	
						appd	M. MOSTOLLER 06/05/02			size dwg no	
										51730-048	
										sheet 2	
sheet index	revision sheet									cage code 22526	

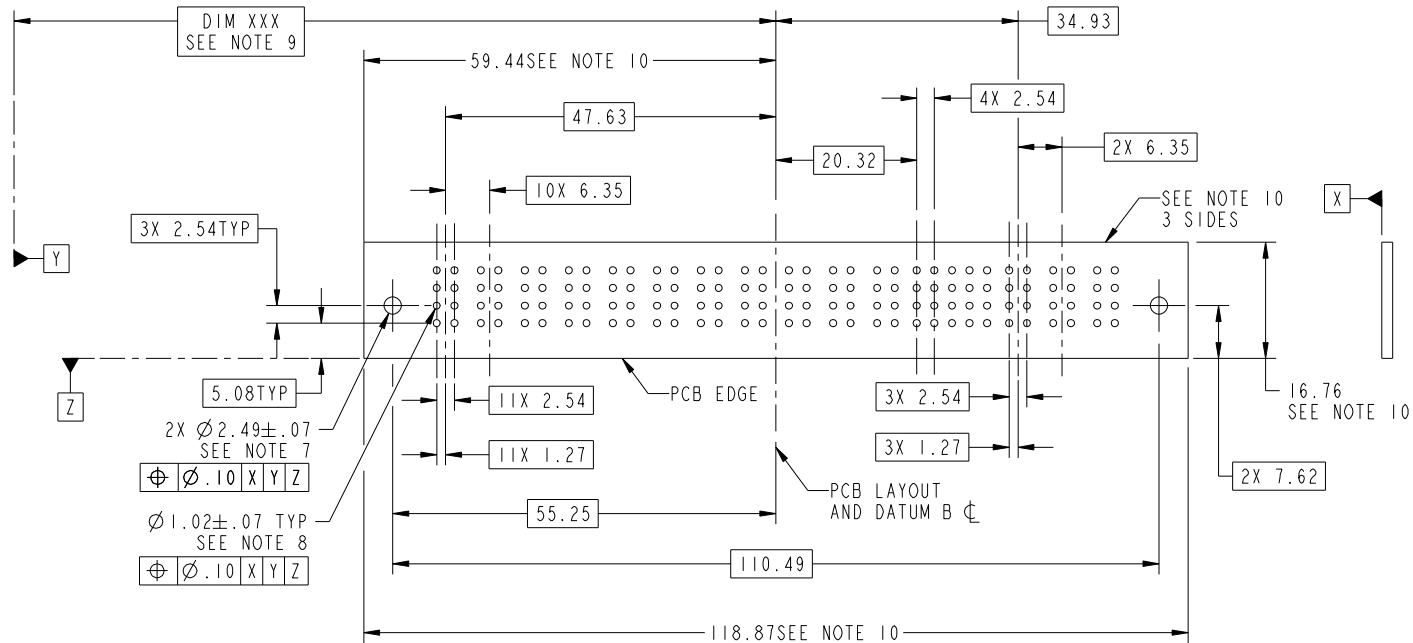
Pro/E

Tous droits strictement reserves. Reproduction ou communication a des tiers interdite sous quelque forme que ce soit sans autorisation écrite du propriétaire. Propriete de c FCI. Droits de reproduction FCI.



All rights strictly reserved. Reproduction or issue to third parties in any form whatever is not permitted without written authority from the proprietor. Property of FCI. Copyright FCI.

PRODUCT NUMBER  
51730-048\_-  
NOTE: 3



RECOMMENDED PCB LAYOUT

mat'l code				SEE NOTE		tolerances unless otherwise specified		CUSTOMER		FCI	
litr	ecn no.	dr	date			linear	0.X ± 0.5	COPY		www.fciconnect.com	
D						angles	0.XX ± 0.25	projection		title	
							0.XXX ± 0.10			3P + 20S + 11P	
							0° ± 2°			RIGHT ANGLE SOLDER HEADER	
						dr	D. INGRAM 06/05/02			product family	PwrBlade
						enrg	M.MOSTOLLER 06/05/02			size	213
						chr	M.MOSTOLLER 06/05/02			dwg no	51730-048
						appd	M.MOSTOLLER 06/05/02			sheet	3
sheet index	revision sheet							scale	1:1		
										cage code	22526

Pro/E

Tous droits strictement reserves. Reproduction ou communication a des tiers interdite sous quelque forme que ce soit sans autorisation écrite du propriétaire. Propriete de c FCI. Droits de reproduction FCI.



All rights strictly reserved. Reproduction or issue to third parties in any form whatever is not permitted without written authority from the proprietor. Property of FCI. Copyright FCI.

PRODUCT NUMBER																																																																																																																																					
51730-048-- NOTE: 3																																																																																																																																					
NOTES: 1. DIMENSIONS AND TOLERANCES ARE IN ACCORDANCE WITH ASME Y14.5M, 1994 UNLESS OTHERWISE SPECIFIED. CONNECTOR NOTES: 2. HOUSING MATERIAL: UL 94 V-0 GLASS FILLED HIGH-TEMP THERMOPLASTIC POWER CONTACT MATERIAL: COPPER ALLOY SIGNAL PIN MATERIAL: COPPER ALLOY 3. PLATING: SEE ITEM 1 & 2 IN PRINT 10064183 FOR PLATING SPEC OF 51730-048; 51730-048LF PRESPECTIVELY 4. MANUFACTURER'S NAME, P/N, AND DATE CODE TO APPEAR ON THIS SURFACE. 5. PRODUCT SPECIFICATION GS-12-149. APPLICATION SPECIFICATION BUS-20-067. PCB NOTES: 6. ALL HOLE DIAMETERS ARE FINISHED HOLE SIZE. 7. MOUNTING HOLES, WHERE APPLICABLE, ARE UNPLATED. 8. $\varnothing 1.151 \pm 0.025$ DRILLED HOLES PLATED WITH 0.008 MIN SnPb OR Sn OVER 0.03 TO 0.08 Cu PLATING TO ACHIEVE $\varnothing 1.02 \pm .07$ HOLE. 9. "DIM XXX" TO BE DETERMINED BY THE CUSTOMER. 10. CONNECTOR KEEP-OUT ZONE. 11. A  SYMBOL WILL BE NEXT TO ANY DIMENSION, VIEW, OR NOTE WHICH HAS BEEN MODIFIED WITH THE CURRENT DRAWING REVISION.																																																																																																																																					
<table border="1"><thead><tr><th colspan="4">mat'l code</th><th colspan="2">SEE NOTE</th><th colspan="2">tolerances unless otherwise specified</th><th colspan="2">CUSTOMER</th><th colspan="2"> www.fciconnect.com</th></tr><tr><th>ltr</th><th>ecn no.</th><th>dr</th><th>date</th><th></th><th></th><th></th><th></th><th>COPY</th><th></th><th colspan="2">title</th></tr></thead><tbody><tr><td>D</td><td></td><td></td><td></td><td>linear</td><td></td><td><math>0.X \pm 0.5</math></td><td></td><td>projection</td><td></td><td colspan="2">3P + 20S + 11P RIGHT ANGLE SOLDER HEADER</td></tr><tr><td></td><td></td><td></td><td></td><td></td><td></td><td><math>0.XX \pm 0.25</math></td><td></td><td></td><td></td><td colspan="2"></td></tr><tr><td></td><td></td><td></td><td></td><td>angles</td><td></td><td><math>0.XXX \pm 0.10</math></td><td></td><td></td><td></td><td colspan="2"></td></tr><tr><td></td><td></td><td></td><td></td><td>dr</td><td>D. INGRAM</td><td>06/05/02</td><td></td><td></td><td></td><td>product family</td><td>PwrBlade</td></tr><tr><td></td><td></td><td></td><td></td><td>enrg</td><td>M.MOSTOLLER</td><td>06/05/02</td><td></td><td>scale</td><td>1:1</td><td>size</td><td>dwg no</td></tr><tr><td></td><td></td><td></td><td></td><td>chr</td><td>M.MOSTOLLER</td><td>06/05/02</td><td></td><td></td><td></td><td>A</td><td>51730-048</td></tr><tr><td></td><td></td><td></td><td></td><td>appd</td><td>M.MOSTOLLER</td><td>06/05/02</td><td></td><td></td><td></td><td></td><td>code</td></tr><tr><td colspan="2">sheet index</td><td colspan="2">revision sheet</td><td></td><td></td><td></td><td></td><td></td><td></td><td></td><td>213</td></tr><tr><td colspan="2"></td><td colspan="2"></td><td></td><td></td><td></td><td></td><td></td><td></td><td></td><td>sheet 4</td></tr></tbody></table>		mat'l code				SEE NOTE		tolerances unless otherwise specified		CUSTOMER		www.fciconnect.com		ltr	ecn no.	dr	date					COPY		title		D				linear		$0.X \pm 0.5$		projection		3P + 20S + 11P RIGHT ANGLE SOLDER HEADER								$0.XX \pm 0.25$										angles		$0.XXX \pm 0.10$										dr	D. INGRAM	06/05/02				product family	PwrBlade					enrg	M.MOSTOLLER	06/05/02		scale	1:1	size	dwg no					chr	M.MOSTOLLER	06/05/02				A	51730-048					appd	M.MOSTOLLER	06/05/02					code	sheet index		revision sheet									213												sheet 4
mat'l code				SEE NOTE		tolerances unless otherwise specified		CUSTOMER		www.fciconnect.com																																																																																																																											
ltr	ecn no.	dr	date					COPY		title																																																																																																																											
D				linear		$0.X \pm 0.5$		projection		3P + 20S + 11P RIGHT ANGLE SOLDER HEADER																																																																																																																											
						$0.XX \pm 0.25$																																																																																																																															
				angles		$0.XXX \pm 0.10$																																																																																																																															
				dr	D. INGRAM	06/05/02				product family	PwrBlade																																																																																																																										
				enrg	M.MOSTOLLER	06/05/02		scale	1:1	size	dwg no																																																																																																																										
				chr	M.MOSTOLLER	06/05/02				A	51730-048																																																																																																																										
				appd	M.MOSTOLLER	06/05/02					code																																																																																																																										
sheet index		revision sheet									213																																																																																																																										
											sheet 4																																																																																																																										
cage code 22526																																																																																																																																					

# Mouser Electronics

Authorized Distributor

Click to View Pricing, Inventory, Delivery & Lifecycle Information:

FCI:

[51730-048](#)