



*Representative photograph, actual product appearance may vary.*

*Due to regional agency approval requirements, some products may not be available in your area. Please contact your regional Honeywell office regarding your product of choice.*

## CSLA1CF

**CSLA Series linear current sensor, 100 A sensed current, source output, through-hole, operates on AC or DC current, bottom mount**

### Features

- Linear output
- AC or DC current sensing
- Through-hole design
- Fast response time
- Output voltage isolation from input
- Minimum energy dissipation
- Maximum current limited only by conductor size
- Adjustable performance and built-in temperature compensation assures reliable operation
- Accurate, low cost sensing
- Operating temperature range -25 °C to 85 °C
- Housing: PBT polyester

### Typical Applications

- Variable speed drives
- Overcurrent protection
- Ground fault detectors
- Current feedback control systems
- Robotics
- UPS and telecommunication power supplies
- Welding power supplies
- Automotive - Battery management systems
- Wattmeters

## Description

Honeywell CS series linear current sensors incorporate our 91SS12-2 and SS94A1 linear output Hall effect transducer (LOHET™). The sensing element is assembled in a printed circuit board mountable housing. This housing is available in four configurations. Normal mounting is with 0.375 inch long 4-40 screw and square nut (not provided) inserted in the housing or a 6-20 self-tapping screw. The combination of the sensor, flux collector, and housing comprises the holder assembly. These sensors are ratiometric.

# Honeywell

## CSLA1CF

**CSLA Series linear current sensor, 100 A sensed current, source output, through-hole, operates on AC or DC current, bottom mount**

Product Specifications	
<b>Sensor Type</b>	Open Loop Linear
<b>Sensed Current Type</b>	ac or dc
<b>Sensed Current Range</b>	0 A to 100 A
<b>Package Style</b>	PCB Bottom Mount
<b>Output Type</b>	Voltage
<b>Sensitivity</b>	29.7 mV N* $\pm$ 2.7 @ 12 Vdc
<b>Supply Current</b>	19 mA max.
<b>Offset Voltage</b>	Vcc/2 $\pm$ 10 %
<b>Supply Voltage</b>	8.0 Vdc to 16.0 Vdc
<b>Offset Shift (%/ °C)</b>	$\pm$ 0.05
<b>Response Time</b>	3 $\mu$ s
<b>Operating Temperature Range</b>	-25 °C to 85 °C [-13 °F to 185 °F]
<b>Storage Temperature Range</b>	-40 °C to 100°C [-40 °F to 212 °F]
<b>Housing Material</b>	PBT Polyester
<b>Mounting</b>	PCB on 3 pins

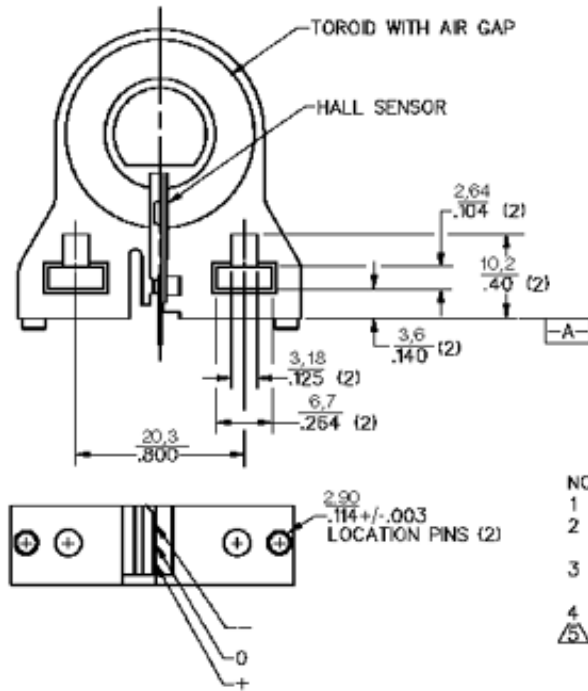
Pinout Style	3 pin
Availability	Global
Comment	* N = Number of Turns
UNSPSC Code	411121
UNSPSC Commodity	411121 Transducers
Series Name	CSLA Series



# CSLA1CF

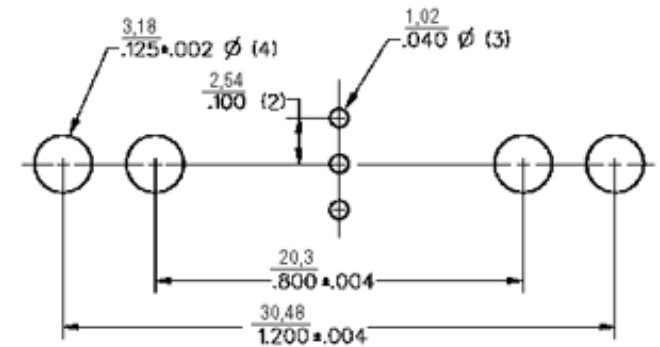
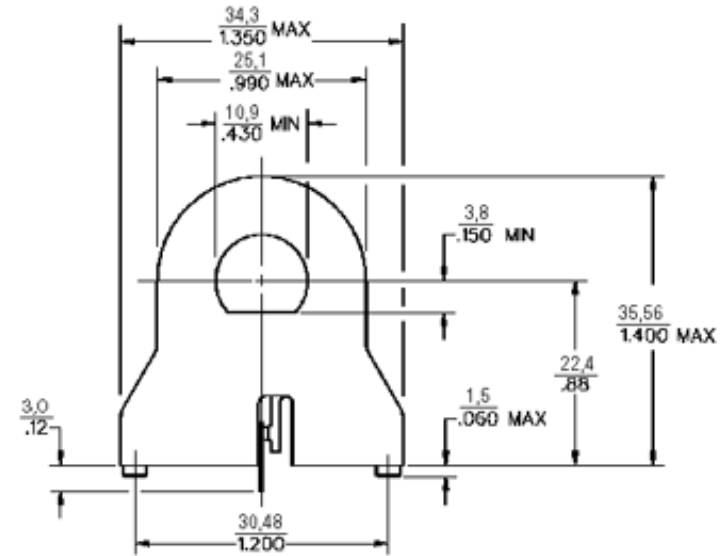
**CSLA Series linear current sensor, 100 A sensed current, source output, through-hole, operates on AC or DC current, bottom mount**

# Mounting Dimensions - for reference only (mm/in)



## NOTES

- 1 - AIR GAP IN TOROID IS 1.90 [.075]
  - 2 - GAUSS LEVEL IN AIR GAP IS 6.0 TO 7.0 GAUSS PER NI
  - 3 - RECOMMENDED MOUNTING IS 4-40 SQUARE NUT AND .375 LONG 4-40 SCREW
  - 4 - SEE 91SS12-2 FOR ELECTRICAL CHARACTERISTICS
- CONVENTIONAL CURRENT FLOW IN DIRECTION INDICATED WILL CAUSE AN INCREASE IN HALL VOLTAGE



## SUGGESTED HOLE CENTERS

SCALE 4:1

**Honeywell**

## CSLA1CF

**CSLA Series linear current sensor, 100 A sensed current, source output, through-hole, operates on AC or DC current, bottom mount**

## **WARNING**

### **PERSONAL INJURY**

DO NOT USE these products as safety or emergency stop devices, or in any other application where failure of the product could result in personal injury.

**Failure to comply with these instructions could result in death or serious injury.**

## **WARNING**

### **MISUSE OF DOCUMENTATION**

- The information presented in this product sheet (or catalog) is for reference only. DO NOT USE this document as product installation information.
- Complete installation, operation and maintenance information is provided in the instructions supplied with each product.

**Failure to comply with these instructions could result in death or serious injury.**